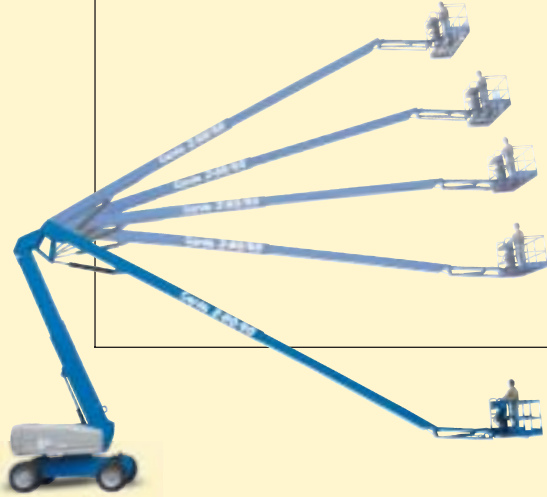




Self-Propelled
Articulating
Boom

ZTM-80/60

Industry leading range
of motion, enhanced
with Genie's new
innovative lift
structure, increases
operator productivity



Genie Industries

Z™ 80/60

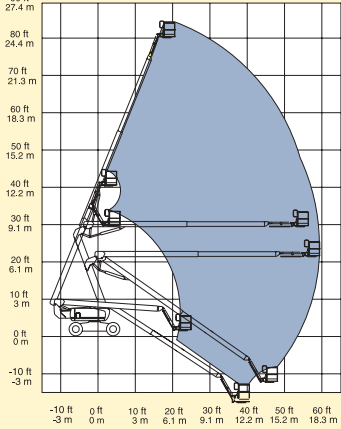
Standard Features

- 26.4 m (86 ft) working height
- 18.3 m (60 ft) outreach
- 8.8 m (29 ft) up and over clearance
- 1.83 m (6 ft) jib boom with 128° range of motion
- 2.44 m (8 ft) steel platform
- 227 kg (500 lb) lift capacity
- Oscillating front axle
- Dual fuel (Petrol/LPG) or diesel engine options
- Fully proportional platform controls with ramp up/down feature
- Hydraulic platform rotation
- 360° continuous turntable rotation
- 12V DC auxiliary power unit
- Full time positive traction drive
- Full time 4WD (on 4WD models)
- Closed-loop hydrostatic drive
- Hydraulic Oil Cooler
- Drive enable system
- Self-leveling platform
- Onboard full diagnostics
- Anti-restart engine protection
- Auto engine fault shutdown
- Engine monitoring display
- AC wiring to platform
- High-angle steer
- Extra Wide RT foam-filled tyres
- Wire braided hydraulic hoses
- Tilt alarm
- Horn
- Hour meter

4 Wheel Steer & Oscillating axle



Range of Motion



Options and Accessories

- Two or four-wheel drive models
- Two or four-wheel steer options
- liquid cooled or air cooled diesel engines
- Alarm package
- Cold start packages
- Onboard welder packages
- 3500 watt AC generator
- Air line to platform
- Weld cables to platform
- Hostile environment packages
- Platform work lights
- Platform swing gate
- Platform rail pinch guard
- Control box covers
- Driving lights
- LPG tank
- Second LPG tank with carrier
- Tool tray

Standards Compliance

- CE EN280

Distributed By:

Genie Industries

GENIE UNITED KINGDOM
The Maltings, Wharf Road
Grantham
Lincolnshire NG31 6BH
England
Telephone: +44 (0)1476 584333
Fax: +44 (0)1476 584334
http://www.genielift.com

GENIE UNITED STATES
18340 NE 76th Street
P. O. Box 97030
Redmond, Washington 98073-9730
Telephone +1 (425) 881-1800
Fax +1 (425) 883-3475
http://www.genielift.com

For further information, please contact your local distributor or the Genie sales office listed. Continuous improvement of our products is a Genie policy. Product specifications are subject to change without notice or obligation. The photographs and drawings in this brochure are for illustrative purposes only. Refer to the appropriate Genie Z80/60 Operator's Manual for instructions on the proper use of this equipment. Failure to follow the appropriate Operator's Manual when using a Genie Z80/60, or to otherwise act irresponsibly, may result in serious injury or death. Copyright © 2002 by Genie Industries. "Genie" and "Z" are Registered Trademarks of Genie Industries in the USA and many other countries. Patents Pending. 11/02 Part No B7243UK