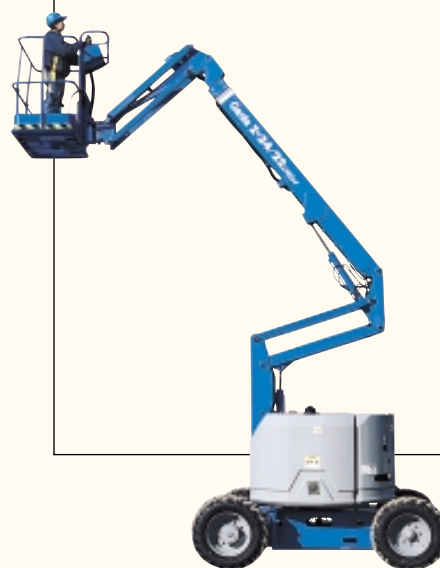


Self-Propelled Articulating Boom

Z-34/22 IC

Unbeatable
engine package
for optimum
speed and
performance.



IC Series:

**G/LPG 4x2
G/LPG 4x4**

**D 4x2
D 4x4**

Genie Industries

Z-34/22 IC

Z-34/22 IC with Gas/LPG or Diesel power options.

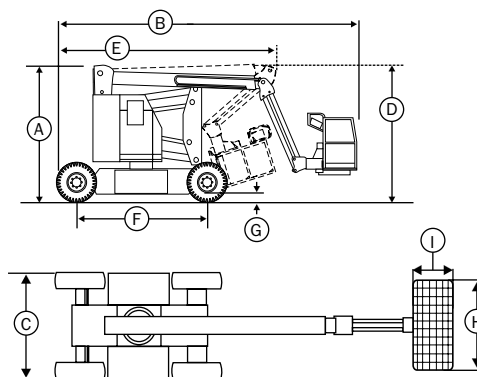
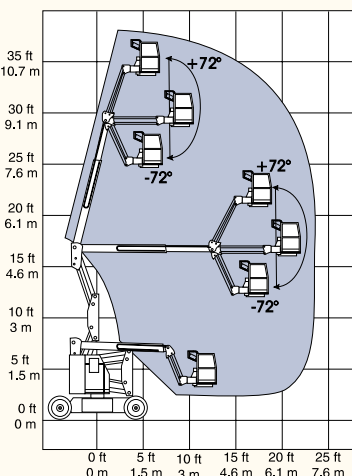
- The Z-34/22 IC Series combines the **industry leading lift structure with an unbeatable engine package.**
- A new drive system, with a high quality axial piston pump and integrated controls, provides the **smooth control, durability and efficient power transmission required for rough terrain operation.**
- Two-speed hydraulic motors **provide optimum speed and torque.** The 4x2 model operates at **0-4.5 mph (0-7.2 km/h) with 37% gradeability.** The 4x4 model operates at **0-4 mph (0-6.4 km/h) with 45% gradeability.**
- Zero tailswing and nose swing in all positions, with a 68 in (1.73 m) wide 4x2 model and 70 in (1.78 m) wide 4x4 model, provide **excellent maneuverability in confined areas.**

- Dual parallelogram riser allows ascent and descent along a vertical plane without retraction or extension of the boom.

Standard Features

- 40 ft 8 in (12.4 m) working height
- 22 ft 4 in (6.8 m) horizontal reach
- Compact 68 in (1.73 m) wide 4x2 model and 70 in wide (1.78 m) 4x4 model
- 500 lb (227 kg) platform capacity
- 4 ft (1.22 m) jib features 144° working range
- Dual wheel spring-applied brakes
- Fully proportional controls
- 160° powered platform rotation
- Auxiliary power unit
- Drive enable system
- Self-leveling platform
- Water, oil and voltage gauges
- AC wiring to platform
- Hour meter

Range of Motion



Specifications

Model	4x2 US	Metric	4x4 US	Metric
Working height	40 ft 8 in	12.4 m	40 ft 8 in	12.4 m
Platform height	34 ft 8 in	10.6 m	34 ft 8 in	10.6 m
(A) Height - stowed	6 ft 7 in	2 m	6 ft 8 in	2 m
(B) Length - stowed	18 ft 6 in	5.6 m	18 ft 7 in	5.7 m
(C) Width	5 ft 8 in	1.73 m	5 ft 10 in	1.78 m
(D) Storage height	89 in	2.26 m	90 in	2.29 m
(E) Storage length	13 ft 5 in	4.1 m	13 ft 6 in	4.1 m
(F) Wheelbase	6 ft 2 in	1.88 m	6 ft 2 in	1.88 m
(G) Ground clearance	5 3/4 in	15 cm	6 1/2 in	17 cm
(H) Platform width	56 in	1.42 m	56 in	1.42 m
(I) Platform length	30 in	76 cm	30 in	76 cm
Horizontal reach	22 ft 4 in	6.8 m	22 ft 4 in	6.8 m
Up and over clearance	15 ft	4.6 m	15 ft	4.6 m
Lift capacity	500 lb	227 kg	500 lb	227 kg
Turning radius - outside	13 ft 1 in	4 m	13 ft 1 in	4 m
Turning radius - inside	5 ft 8 in	1.73 m	5 ft 8 in	1.73 m
Turntable rotation	355°		355°	
Turntable tailswing	Zero		Zero	
Power source	Kubota G/LPG 24.5 hp (18.3 kw)		Kubota G/LPG 24.5 hp (18.3 kw)	
	Kubota Diesel 26 hp (19.4 kw)		Kubota Diesel 26 hp (19.4 kw)	
Drive speed - stowed	0-4.5 mph	0-7.2 km/h	0-4 mph	0-6.4 km/h
Drive speed - raised or extended	0.6 mph	1 km/h	0.6 mph	1 km/h
Extension speed	40 ft/40 sec	12.2 m/40 sec	40 ft/40 sec	12.2 m/40 sec
Controls	proportional		proportional	
Platform rotation	160°		160°	
AC wiring to platform	standard		standard	
Tires	9-14.5 industrial		10-16.5 rough terrain	
Gradeability*	37%		45%	
Hydraulic tank capacity	18 gal	68 litre	18 gal	68 litre
Fuel tank capacity	11.5 gal	44 litre	11.5 gal	44 litre
Weight	10,500 lb	4,763 kg	10,700 lb	4,854 kg

*Stowed position only

Options and Accessories

- Alarm package
- Cold start packages
- 2000 watt AC generator
- 4 ft (1.22 m) platform
- Platform swing gate
- Foam-filled tires
- 10-16.5 rough terrain tires for 4x2
- Industrial non-marking tires
- Platform-mounted work light
- Air line to platform

Standards Compliance

- ANSI/SIA A92.5
- CE compliance option
- CSA/CAN3-B354.4-M82
- AS 1418.10

Distributed By:

Genie Industries

GENIE UNITED STATES

18340 NE 76th Street
P.O. Box 97030
Redmond, Washington 98073-9730
Telephone (425) 881-1800
Toll Free in USA/Canada 800-536-1800
Fax (425) 883-3475
<http://www.genielift.com>

GENIE UNITED KINGDOM

The Maltings, Wharf Road
Grantham
Lincolnshire NG31 6BH
England
Telephone (44) 01476-584333
Fax (44) 01476-584334
<http://www.genielift.com>