

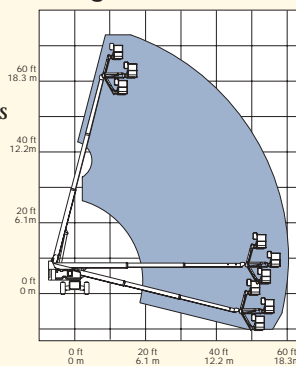
S-60/S-65

Standard Features

- S-60 has 20.3 m (66 ft) working height
- S-65 has 21.8 m (71 ft) working height
- S-60 has 15.6 m (51 ft 3 in) horizontal reach
- S-65 has 17.2 m (56 ft 4 in) horizontal reach
- Up to 272 kg (600 lb) lift capacity on the S-60
- 227 kg (500 lb) lift capacity on the S-65
- Oscillating axle system on 4x4 models
- Dual extended cylinders
- Dual fuel (Petrol/LPG) or diesel engine options
- Fully proportional platform controls with ramp up/down feature
- Hydraulic platform rotation
- 360° continuous turntable rotation

- 12V DC auxiliary power
- Fuel select switch on platform and ground control panels (Petrol/LPG models)
- Closed-loop hydrostatic drive
- Positive traction drive
- Drive enable system
- Self-levelling platform
- Rough terrain air tyres
- Locking turntable covers
- Anti-restart engine protection
- Auto engine fault shutdown
- AC wiring to platform
- Wire braided hose
- Tilt alarm
- Horn
- Hour meter

Range of Motion

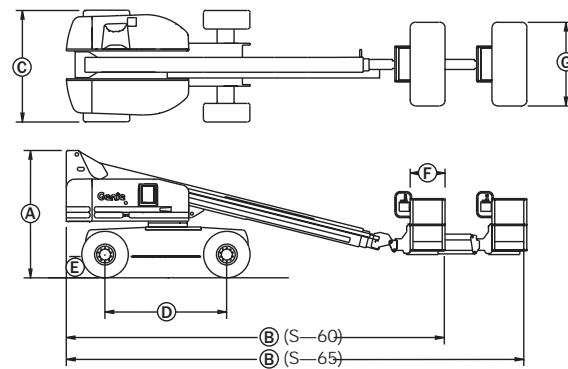


Options and Accessories

- Alarm package
- Cold start packages
- 2,500 or 3,000 watt AC generator
- 2.44 m (8 ft) steel platform
- 340 kg (750 lb) lift capacity option on the S-60
- Platform swing gate
- Air line to platform
- Platform rail pinch guard
- Platform work lights
- Loegering steel half tracks
- Loegering soft half tracks
- Lockable platform control box cover
- Tool tray
- Foam filled, non marking and flotation tyre packages
- Fluorescent tube caddy
- Hostile environment packages
- Hydraulic oil cooler
- LPG tank
- GS/LPS rating for Ford engine powered machines
- Pipe Cradle
- Driving lights

Standard Compliance

- CE EN280



Specifications

Model	S-60		S-65	
	Metric	US	Metric	US
Working height ¹ max	20.3 m	66 ft	21.8 m	71 ft
Platform height max	18.3 m	60 ft	19.8 m	65 ft
Ⓐ Height - stowed	2.74 m	9 ft	2.74 m	9 ft
Ⓑ Length - stowed	8.3 m	27 ft 2 in	9.4 m	30 ft 10 in
Ⓒ Width	2.44 m	8 ft	2.44 m	8 ft
Ⓓ Wheelbase	2.74 m	9 ft	2.74 m	9 ft
Ⓔ Ground clearance	30 cm	12 in	30 cm	12 in
Ⓕ Platform length: 6 ft	76 cm	30 in	76 cm	30 in
8 ft	91 cm	36 in	91 cm	36 in
Ⓖ Platform width: 6 ft	1.83 m	72 in	1.83 m	72 in
8 ft	2.44 m	96 in	2.44 m	96 in
Horizontal reach max	15.6 m	51 ft 3 in	17.2 m	56 ft 4 in
Maximum lift capacity 6 ft platform	272 kg	600 lb	227 kg	500 lb
Maximum lift capacity 8 ft platform	227 kg	500 lb	227 kg	500 lb
Turning radius - outside	6.76 m	22 ft 2 in	6.76 m	22 ft 2 in
Turning radius - inside	3.68 m	12 ft 1 in	3.68 m	12 ft 1 in
Turntable rotation	360° continuous		360° continuous	
Turntable tailswing	1 m	3 ft 3 1/2 in	1 m	3 ft 3 1/2 in
Power source	Ford LRG 425 EFI Petrol/LPG 82 hp (61 kw) Deutz Diesel F4L 1011 56 hp (42 kw) Perkins Diesel 704-30 60 hp (45 kw)			
Controls	12V DC proportional		12V DC proportional	
Platform rotation	160°		160°	
Tyres	15 - 19.5 NHS		15 - 19.5 NHS	
Hydraulic tank capacity	170 litre	45 gal	170 litre	45 gal
Fuel tank capacity	125 litre	33 gal	125 litre	33 gal
Weight ²	11,821 kg	26,060 lb	12,882 kg	28,400 lb
S-60 and S-65	4x2		4x4	
Drive speed - stowed	7.1 km/h	4.4 mph	4.8 km/h	3 mph
Petrol/LPG models	12.2 m/6.2 sec	40 ft/6.2 sec	12.2 m/9.1 sec	40 ft/9.1 sec
Drive speed - stowed	6.4 km/h	4 mph	4.5 km/h	2.8 mph
Diesel models	12.2 m/6.8 sec	40 ft/6.8 sec	12.2 m/9.7 sec	40 ft/9.7 sec
Drive speed, raised or extended (all models)	1 km/h	0.6 mph	1 km/h	0.6 mph
	12.2 m/40 sec	40 ft/40 sec	12.2 m/40 sec	40 ft/40 sec
Gradeability - stowed	30%		40%	

¹The metric equivalent of working height adds 2m to platform height, US adds 6ft to platform height
²Weights quoted are subject to change

Distributed By:

Genie Industries

GENIE UNITED KINGDOM

The Maltings, Wharf Road
Grantham
Lincolnshire NG31 6BH
England
Telephone (44) 01476-584333
Fax (44) 01476-584334
<http://www.genielift.com>

GENIE UNITED STATES

18340 NE 76th Street
P.O. Box 97030
Redmond, Washington 98073-9730
Telephone +1 425 881 1800
Fax +1 425 883 3475
www.genielift.com

For further information, please contact your local distributor or the Genie sales office listed. Continuous improvement of our products is a Genie policy. Product specifications are subject to change without notice or obligation. The photographs and drawings in this brochure are for illustrative purposes only. Refer to the appropriate Genie S-60 and S-65 Operator's Manual for instructions on the proper use of this equipment. Failure to follow the appropriate Operator's Manual when using a Genie S-60 or S-65, or to otherwise act irresponsibly, may result in serious injury or death. Copyright © 1999 by Genie Industries. Genie and S are Registered Trademarks of Genie Industries in the USA and many other countries. Genie is the owner of US Patent: 5,447,331 and Patents Pending. 07/06 Part No. B65016UK.

Self-Propelled Telescopic Booms

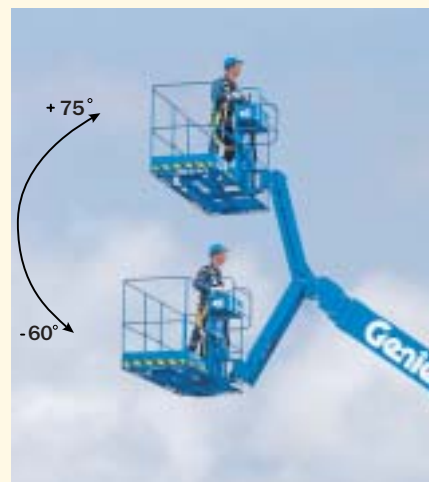
With unique
out-and-up
jib option.



Genie Industries

The Genie S-60 and S-65 are the value leaders in the industry.

Genie's redesigned stick boom family includes faster lift speed, a more powerful engine, a stiffer mast and updated styling. Choose the Genie S-60 boom, with 20.3 m (66 ft) of working height, or the S-65, with an additional 1.52 m (5 ft) articulating jib boom. Customise your boom from many option packages.



S-65 Out-and-Up Articulating Jib Boom

This special option gives you an additional 1.52 m (5 ft) of horizontal reach for a total of 17.2 m (56 ft 4 in). The S-65 jib boom gives you flexibility too – 135° of working range. You not only access 75° above horizontal, but you can get to 60° below horizontal.

Standard Features

Proportional Controls

Allow smooth operation and easy positioning.

160i Hydraulic Platform Rotator

Gives you precise placement without repositioning the boom.

Easily Accessible Components

The swing-out engine tray and easy-to-understand electrical system simplify routine maintenance.

Positive Traction Drive

Full-time positive traction system standard on both 4x4 and 4x2 models.

Drive Enable System

Informs operator when the drive and steer functions will move opposite the controller movements.

Low-Profile Chassis Covers

Provide high visibility for the operator while unit is in stowed position.

Platform Controls

Large, simple-to-use controls for easy operation.

Transportability

The S-60 and S-65 are designed to load and unload easily from transport vehicles.

Increased Lift Speed

The capability to operate multiple functions simultaneously results in maximum lift speed. The S-60 elevates from the ground to full height in just 57 seconds.

Stiffer Mast Design

The new flat-bottom mast design is 7% stiffer than before when fully extended. The stiffer mast results in less platform movement for more comfortable operation.

Terrain Tracking Active Oscillation System

This revolutionary system automatically senses the terrain and adjusts the front axle oscillation based on ground conditions. The system maximises four point contact with the ground for improved traction and an amazingly smooth ride.



Easily customised to meet your needs:

Engine Options

- Ford LRG 425 EFI
- Petrol/LPG 61 kw (82 hp)
- Deutz Diesel F4L 1011
- 42 kw (56 hp)
- Perkins Diesel 704-30
- 45 kw (60 hp)

Platform Options

- Standard: Steel 1.83 m (6 ft)
- Optional: Steel 2.44 m (8 ft)

Drive Options

- 4x2 – two wheel drive
- gradeability up to 30%
- 4x4 – four wheel drive
- gradeability up to 40%

Axle Options

- Oscillating
- Non-oscillating

Tyre Options

- Rough terrain foam-filled
- Rough terrain air



S-60/S-65