



Self-Propelled Telescopic Boom

S-120/125

Industry-leading
outreach and
manoeuvrability.



Genie Industries

S™-120/125

S-120

- S-120 has 38.6 m (126 ft) working height
- Industry-leading outreach of 22.9 m (75 ft)
- 340 kg (750 lb) lift capacity

S-125

- S-125 has 40.1 m (131 ft) working height
- Industry-leading outreach of 24.4 m (80 ft)
- 227 kg (500 lb) lift capacity

Standard Features

- Four-wheel drive with four-wheel brakes
- Four-wheel steer includes front, rear, crab and coordinated steer functions
- Extendable axles, operated from platform
- Three diesel engine options
- 2.44 m (8 ft) steel platform
- Fully proportional platform controls with ramp up/down feature

- Hydraulic platform rotation
- 360° continuous turntable rotation
- 12V DC auxiliary power
- Closed-loop hydrostatic drive
- Positive traction drive
- Drive enable system
- Self-leveling platform
- Onboard full diagnostics
- Anti-restart engine protection
- Auto engine fault shutdown
- Hydraulic oil cooler
- Engine monitoring display
- AC wiring to platform
- Foam-filled tyres
- Wire braided hose
- Tilt alarm
- Horn
- Hour meter

Options and Accessories

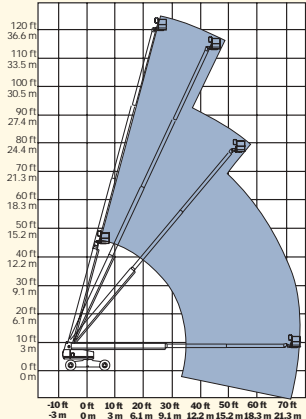
- Cold start packages
- 3500 watt AC generator
- Platform swing gate
- Air line to platform
- Platform rail pinch guard
- Platform work lights
- Hostile environment packages
- Tool tray
- Driving lights

Standards Compliance

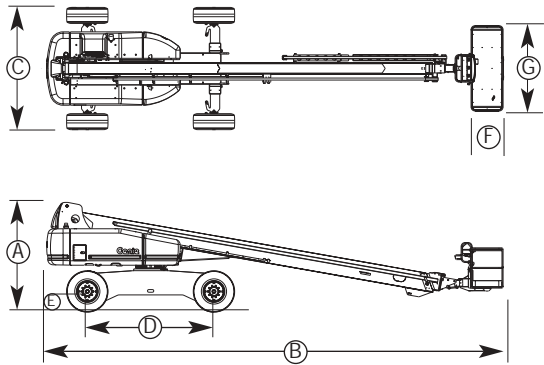
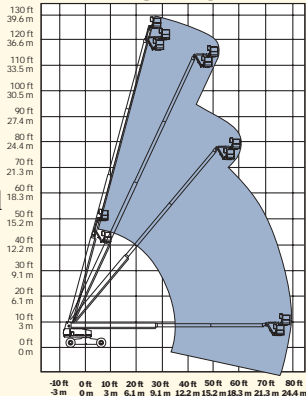
- CE EN280

Range of Motion

S-120



S-125



Specifications

| Model | S-120 | | S-125 | |
|--|--|-------------|----------------------|-------------|
| | Metric | US | Metric | US |
| Working height* | 38.6 m | 126 ft | 40.1 m | 131 ft |
| Platform height | 36.6 m | 120 ft | 38.1 m | 125 ft |
| Ⓐ Height - stowed | 3.07 m | 10 ft 1 in | 3.07 m | 10 ft 1 in |
| Ⓑ Length - stowed | 13 m | 42 ft 8 in | 14.02 m | 46 ft |
| Length - transport (jib tucked underneath) | 12.17 m | 39 ft 11 in | 12.17 m | 39 ft 11 in |
| Ⓒ Width axles retracted | 2.49 m | 8 ft 2 in | 2.49 m | 8 ft 2 in |
| Width axles extended | 3.35 m | 11 ft | 3.35 m | 11 ft |
| Ⓓ Wheelbase | 3.66 m | 12 ft | 3.66 m | 12 ft |
| Ⓔ Ground clearance | 40 cm | 15 ¾ in | 40 cm | 15 ¾ in |
| Ⓕ Platform length | 91 cm | 36 in | 91 cm | 36 in |
| Ⓖ Platform width | 2.44 m | 96 in | 2.44 m | 96 in |
| Horizontal reach max. | 22.9 m | 75 ft | 24.4 m | 80 ft |
| Lift capacity | 340 kg | 750 lb | 227 kg | 500 lb |
| Turning radius - outside | 7.4 m | 24 ft 4 in | 7.4 m | 24 ft 4 in |
| retracted axles 4-wheel steer | | | | |
| Turntable rotation | 360° continuous | | 360° continuous | |
| Turntable tailswing | 1.68 m | 5 ft 6 in | 1.68 m | 5 ft 6 in |
| retracted axles | | | | |
| Power source | Cummins 4B3.9 diesel 56 kw (75 hp) Deutz FL913 diesel 57 kw (77 hp) Perkins 1004-42 diesel 60 kw (81 hp) | | | |
| Controls | proportional | | | |
| Platform rotation | 160° hydraulic | | 160° hydraulic | |
| Auxiliary power unit | 12V DC | | 12V DC | |
| Tyres | 18 x 22.5, 18 pr, FF | | 18 x 22.5, 18 pr, FF | |
| Hydraulic tank capacity | 208 litre | 55 gal | 208 litre | 55 gal |
| Fuel tank capacity | 151 litre | 40 gal | 151 litre | 40 gal |
| Drive speed, stowed | 4.8 km/h | 3 mph | 4.8 km/h | 3 mph |
| Gradeability, stowed | | 40% | | 40% |
| Weight** | 20,112 kg | 44,340 lb | 20,248 kg | 44,640 lb |

* The metric equivalent of working height adds 2 m to platform height. U.S. adds 6 ft to platform height.
** Weight will vary depending on options and/or country standards.

| | | | |
|-----------------|--|---|--|
| Distributed By: | | Genie Industries | |
| | | GENIE UNITED KINGDOM The Maltings, Wharf Road Grantham Lincolnshire NG31 6BH England Telephone: +44 (0)1476 584333 Fax: +44 (0)1476 584334 http://www.genielift.com | GENIE UNITED STATES 18340 NE 76th Street P.O. Box 97030 Redmond, Washington 98073-9730 Telephone +1 (425) 881 1800 Fax +1 (425) 88-475 http://www.genielift.com |

For further information, please contact your local distributor or the Genie sales office listed. Continuous improvement of our products is a Genie policy. Product specifications are subject to change without notice or obligation. The photographs and drawings in this brochure are for illustrative purposes only. Refer to the appropriate Genie S-120 and S-125 Operator's Manual for instructions on the proper use of this equipment. Failure to follow the appropriate Operator's Manual when using a Genie S-120 or S-125, or to otherwise act irresponsibly, may result in serious injury or death. Copyright © 2000 by Genie Industries. "Genie" and "S" are Registered Trademarks of Genie Industries in the USA and many other countries. Patents Pending. 06.02 Part No. B7200UK