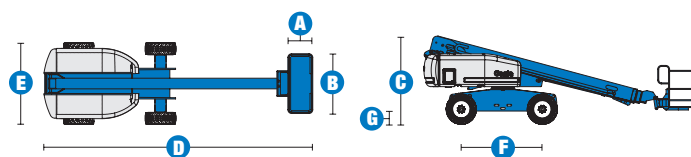


Specifications



MODELS	S™-60HC	
MEASUREMENTS	Metric	US
Working height maximum*	19.78 m	64 ft 4 in
Platform height maximum	17.78 m	58 ft 4 in
Horizontal reach maximum in 340 kg (750 lb) maximum outreach zone	15.48 m	50 ft 10 in
Horizontal reach maximum in 567 kg (1,250 lb) maximum capacity zone	11.86 m	38 ft 11 in
Below ground reach	1.70 m	5 ft 7 in
A Platform length - 8 ft model	91 cm	3 ft
Platform length - 6 ft model	76 cm	2 ft 6 in
B Platform width - 8 ft model	2.44 m	8 ft
Platform width - 6 ft model	1.83 m	6 ft
C Height - stowed	2.72 m	8 ft 11 in
D Length - stowed	8.51 m	27 ft 11 in
E Width	2.49 m	8 ft 2 in
F Wheelbase	2.50 m	8 ft 2.5 in
G Ground clearance - centre	37 cm	1 ft 2.5 in

PRODUCTIVITY		
Lift capacity - maximum outreach zone	340 kg	750 lbs
Lift capacity - maximum capacity zone	567 kg	1,250 lbs
Platform rotation	160°	160°
Turntable rotation	360° continuous	
Turntable tailswing	1.22 m	4 ft
Drive speed - 2WD stowed	6.4 km/h	4.0 mph
Drive speed - 4WD stowed	4.8 km/h	3.0 mph
Drive speed - raised or extended	1.1 km/h	0.68 mph
Gradeability - 2WD stowed**	30%	30%
Gradeability - 4WD stowed**	45%	45%
Turning radius - inside	2.36 m	7 ft 9 in
Turning radius - outside	5.54 m	18 ft 2 in
Controls	12 V DC proportional	
Tyres - RT Lug	355/55D 625	

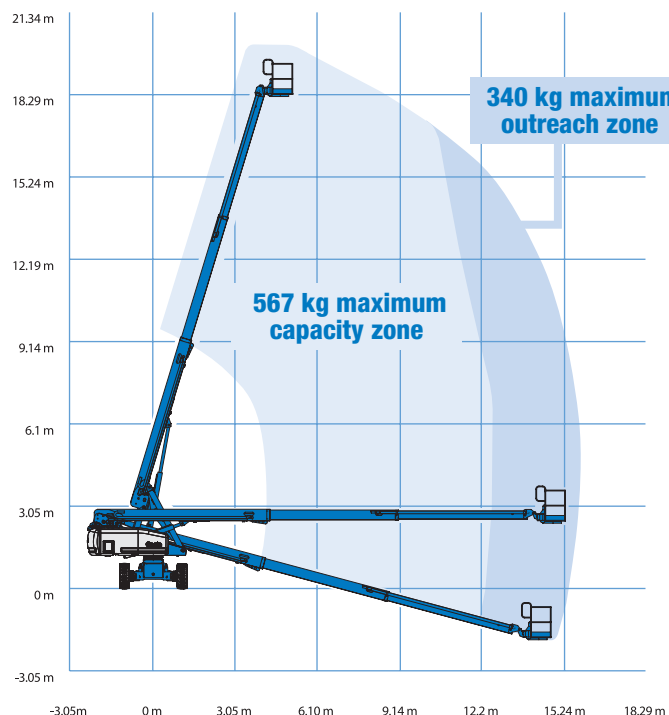
POWER		
Power source	Ford DSG-423 4 cylinder petrol/LPG 75 hp (56 kW) Deutz D-2011 L03i cylinder diesel 46 hp (34.3 kW) Perkins 404C-22 4 cylinder diesel 51 hp (38 kW)	
Auxiliary power unit	12 V DC	
Hydraulic tank capacity	170 L	45 gal
Fuel tank capacity	132 L	35 gal

SOUND & VIBRATION LEVELS		
Sound pressure level (ground workstation)	83 dBA	83 dBA
Sound pressure level (platform workstation)	79 dBA	79 dBA
Vibration	<2.5 m/s ²	<8 ft 2 in/s ²

WEIGHT***		
2WD	9,996 kg	22,038 lbs
4WD	10,073 kg	22,208 lbs
CE Foam Filled tyres	add 343 kg	add 756 lbs

STANDARDS COMPLIANCE	CE EN280, PB-10-611-03
----------------------	------------------------

RANGE OF MOTION S™-60HC



* The metric equivalent of working height adds 2 m to platform height. U.S. adds 6 ft to platform height.
 ** Gradeability applies to driving on slopes, see operator's manual for details regarding slope ratings.
 *** Weight will vary depending on options and/or country standards.

Features

EASILY CONFIGURED TO MEET YOUR NEEDS

PLATFORM OPTIONS

- Steel 2.44 m (8 ft)
- Steel 1.83 m (6 ft)
- Steel 2.44 m (8 ft) tri-entry

POWER

- Ford petrol/LPG 75 hp (56 kW)
- Deutz diesel 46 hp (34.3 kW)
- Perkins diesel 51 hp (38 kW)

DRIVE OPTIONS

- 2 x 4
- 4 x 4

AXLE OPTIONS

- Active oscillation
- Non-oscillating

TYRE OPTIONS

- Rough terrain air-filled (standard)
- Rough terrain foam-filled
- Rough terrain non-marking (air or foam-filled)

STANDARD FEATURES

MEASUREMENTS

- 19.78 m (64 ft 4 in) working height
- 15.48 m (50 ft 10 in) maximum horizontal reach with 340 kg (750 lb) load
- 11.86 m (38 ft 11 in) horizontal reach with 567 kg (1,250 lb) load
- 340 kg (750 lb) platform load in maximum outreach zone
- 567 kg (1,250 lb) platform load in maximum capacity zone

PRODUCTIVITY

- Dual capacity with automatic envelope control
- Electronic platform load and position monitoring
- 3 person capacity deck
- Self-levelling platform
- Hydraulic platform rotation
- Fully proportional Hall effect joystick controls
- Thumb rocker steer
- Drive enable
- AC power to platform
- Tilt alarm
- Descent alarm
- Hour meter
- Horn
- 360° continuous turntable rotation

STANDARD FEATURES cont.

PRODUCTIVITY cont.

- Positive traction drive
- Two speed wheel motors
- Certified load sensor

POWER

- All engines are emissions compliant
- 12 V DC auxiliary power
- Anti-restart engine protection
- Auto engine fault shutdown
- Swing out engine tray
- Deutz intake air heater



OPTIONS & ACCESSORIES

PRODUCTIVITY

- Platform swing gate
- Half-mesh platform inserts with swing gate
- Platform top auxiliary rail
- Lockable platform control box cover
- Weld leads to platform
- Air line to platform
- Hydraulic oil cooler
- Fire resistant hydraulic oil
- Biodegradable hydraulic oil
- Basic hostile environment kit
- Deluxe hostile environment kit
- Aircraft protection package (6 ft platform only)
- Tool tray
- Fluorescent tube caddy**
- Pipe cradle (pair)**
- Alarm package (flashing beacon and travel alarm)
- Panel cradle package* (foam filled)
- Platform work lights
- Second battery
- Tow package

POWER

- Engine gauge package
- AC Generator Packages
- Cold Weather Packages
- Diesel scrubber muffler with spark arrestor
- Additional LPG tank with carrier**

* Available on tri-entry basket model only

**Available aftermarket only

Enquiries from Europe:

Tel: +31 165 519 361

Fax: +31 165 511 148

Email: AWP-InfoEurope@terex.com

Offices:

France

Tel: +33 (0)2 37 26 09 99

Fax: +33 (0)2 37 26 09 98

Germany

Tel: +49 (0)4221 491 810

Fax: +49 (0)4221 491 820

Spain

Tel: +34 93 572 50 90

Fax: +34 93 572 50 91

Scandinavia

Tel: +46 31 57 51 00

Fax: +46 31 57 51 04

The Netherlands

Tel: +31 165 519 361

Fax: +31 165 511 148

UK

The Maltings

Wharf Road

Grantham NG31 6BH

UK

Tel: +44 (0)1476 584333

Fax: +44 (0)1476 584334

Middle East

Tel: +971 4 399 0381

Fax: +971 4 399 0382

Email: AWP.Infome@terex.com

Corporate Headquarters:

Genie United States

18340 NE 76th Street

P.O. Box 97030

Redmond, WA

USA 98073-9730

Tel: +1 425 881-1800

Fax: +1 425 883-3475

Distributed By: